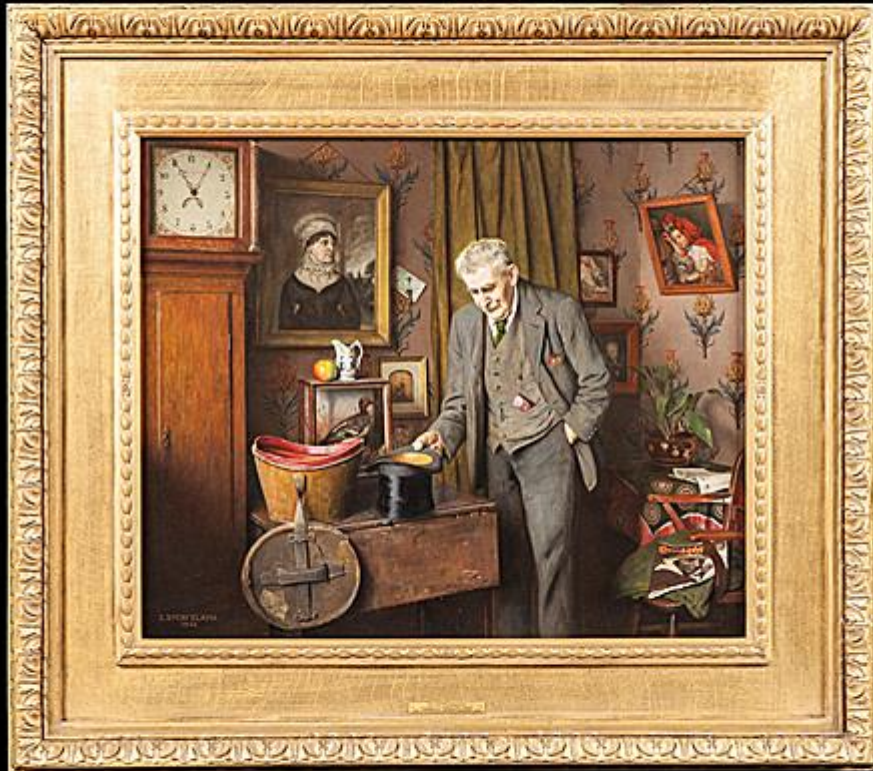




# BUTCHOFF

LONDON

XVIII-XIX CENTURY  
FURNITURE & DECORATIVE ARTS



**'HIS OLD WEDDING HAT' BY CHARLES  
SPENCELAYH**

**Sight size: H: 20 in / 50 cm | W: 24 in / 60 cm**

**8735**



# BUTCHOFF

LONDON

XVIII-XIX CENTURY  
FURNITURE & DECORATIVE ARTS



Depicts a late nineteenth-century English interior scene with soft light. A man stands staring at a resting black top hat next, which sits next to a hatbox on a drop-leaf table. Oil on canvas, signed and dated lower left: C. Spencelayh 1943.

## Literature:

Additional Note: Various labels on the back noting artist, title or the work and UK fine art dealers.