



BUTCHOFF
LONDON

XVIII-XIX CENTURY
FURNITURE & DECORATIVE ARTS



**A SUPERB SPECIMEN MARBLE CENTRE TABLE
ATTRIBUTED TO CAVAMELLI**

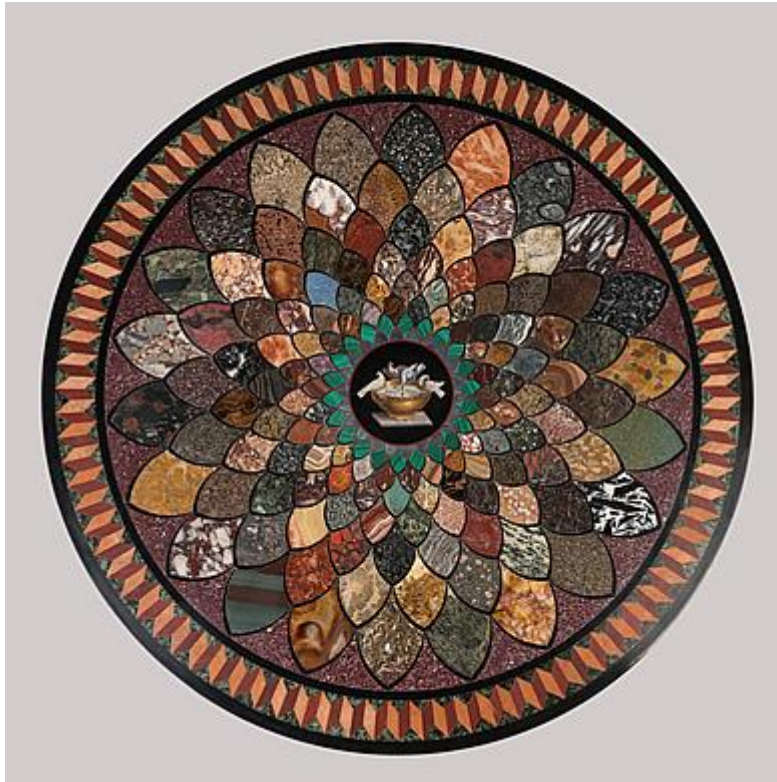
Dimensions: H: 31 in / 78 cm | Dia: 40 in / 101 cm

9741



BUTCHOFF
LONDON

XVIII-XIX CENTURY
FURNITURE & DECORATIVE ARTS



A Superb Specimen Marble Centre Table
The Top attributed to Alfonso Cavamelli of Rome

Inspired by the Roman mosaics discovered at the Palatine's Palace of the Ceasars, the circular top is made up from a host of rare marbles & semi-precious stones arranged in a radiating band including lapis lazuli, malachite, and imperial porphyry; centred with a micromosaic medallion of the Doves of Pliny, and the whole surrounded by an Etruscan border with a ribbon-fretted diamond pattern similarly seen on two other tops by Cavamelli's workshops. The giltwood base on three scrolled legs, the central stem carved with acanthus leaves, and a carved border with egg-and-dart mouldings. Italian, circa 1835

The "Doves of Pliny" is a term used to refer to a specific type of ancient Roman floor mosaic which depicts doves perched on a plinth or pedestal. These mosaics were found in various Roman villas, homes, and public buildings and date back to the 2nd to 4th century AD.

The doves in these mosaics are often depicted with their heads turned towards each other,



BUTCHOFF

L O N D O N

XVIII-XIX CENTURY
FURNITURE & DECORATIVE ARTS

symbolizing love and peace. In ancient Rome, doves were associated with the goddess Venus, who was the goddess of love and fertility. The depiction of doves in the mosaics therefore represents love, peace, and prosperity, and was meant to bring good fortune to the home or building in which it was placed.